



Someries
Infant School

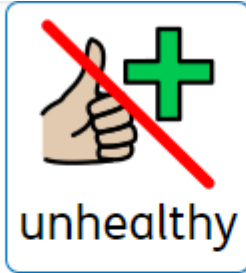
Knowledge Organiser

Prime Learning Challenge: Would you be friends with the Twits?

Key language



healthy



unhealthy



carbohydrates



protein



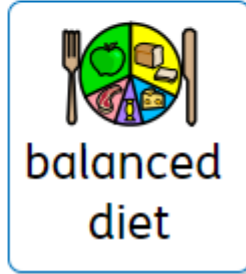
dairy



fruit and
vegetables



fats



balanced
diet

The Eatwell

Plate:

Can you name each section?

Can you name some of the foods you see?

Can you think of any more foods which could be added to each section?



Sentences describing Mr Twit:

This **horrid, repulsive** man had a **foul** beard full of **mouldy cheese**.
Mr Twit has a **disgusting, smelly** beard because **he never washes it**.
Mr Twit's beard is **untidy and scruffy** because **he never brushes it**.
This **unpleasant slob** has **foul breath and holes in his shoes**.
This **vile beast's** beard is full of **fish bones and lumpy yoghurt** that reeks.

- **horrid, repulsive, revolting, disgusting, foul, slob, old man, beast, ugly, smelly, filthy, grotesque, vile**
- **fish bones, mouldy cheese, lumpy yoghurt, rotten apple, sour milk, mouldy bread**
- **he never washes, he never brushes his beard, he never changes his clothes**

Quentin Blake's



Quentin Blake sketches in a _____ style.

I could use _____ to sketch in the style of Quentin Blake.

To create darker lines I _____.

To create fainter lines I _____.

I like/ dislike Quentin Blake's sketching style because _____.

Instructions for playing a trick on Mr Twit

The Glass Eye Trick

1. Pick out your husband's favourite glass.
2. Carefully pop out your slimy glass eye and slowly place it into the bottom of the glass.
3. Gently pour the frothiest beer you can find into the glass until it is full to the brim.
4. Calmly hand the glass of beer to your unsuspecting victim.
5. Patiently wait for them to realise that you've been keeping an eye on them the whole time!



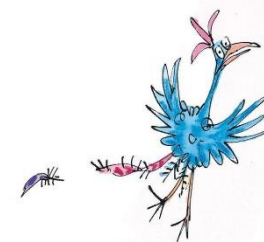
Mr Twit



Mrs Twit



Mugglewump



Rolypoly Bird